



Turn paper stacks into results that stack up—
high speeds, rich quality

HP ScanJet Enterprise Flow 5000 s4



Fast, smooth scanning—
even unattended



Peak workflow performance.
Smarter scanning.



Professional-grade scanning
that helps save time

Fast, smooth scanning—
even
unattended



Give your office powerful scan speed and accuracy, with batch-scanning performance customized for the needs of your business. Get fast, unattended scanning with the 80-sheet automatic document feeder (ADF). Confidently capture stacks of mixed paper sizes and weights. Seamlessly manage workflows with a scanner recommended for 6,000 pages per day. Scanning speeds of up to 50 pages per minute (ppm)/100 images per minute (ipm) for black-and-white, grayscale, and color¹ keep projects moving. Built-in software helps you save time and simplify complex jobs.



The new office workhorse

Rely on this scanner time after time—recommended for 6,000 pages per day.



Fits where you need it

Free up space for work. This HP ScanJet is small and slim—a modern design perfect for the desktop.



Superb paper handling

Capture every page easily—even stacks of mixed media—with HP EveryPage and an ultrasonic sensor.²

Peak workflow performance. Smarter scanning.

Image capture

Easy to control, with scans in one touch

Save time and improve performance with customized workflows. Create one-button scan settings for recurring tasks, and make selections using the LCD control panel.



80^{page}
ADF

Quickly scan stacks of paper

Load up to 80 pages into the ADF for fast, unattended scanning.

50^{ppm}
100^{ipm}

Scan both sides in one pass

Capture entire documents with one-pass duplex scanning at 50 ppm/100 ipm.¹

300
dpi

Look sharp

Count on accurate, enhanced images and text with every scan.

Processing

Automatically process documents

Detect bar codes for use in file naming, batch separation, and metadata; set misfeed detection; automatically delete blank pages; separate large scan jobs into documents by number of pages, barcode, blank pages, and document separator pages; apply digital stamps; merge pages in duplex scanning.



Capture a wide range of document types

Handle paper sizes up to 122 inches (309.9 cm) and paper weights up to 110 lb (413g/m²). Scan A3-size documents without a carrier sheet.

Delivery

Scan into popular applications

Save time and simplify complex scan jobs with HP Smart Document Scan Software. Scan images directly into applications, without having to open another program, with included and full-featured TWAIN and ISIS[®]. Easily transfer scans into editable text, encrypted PDF files, and more file types, using built-in optical character recognition (OCR).



Manage

Remote monitoring for smarter scanning

Identify new devices and gain insight into scanning with HP Web Jetadmin remote discovery and monitoring.³



Professional-grade scanning that helps save time



Easily manage paper documents

Produce scans at up to 50 ppm/100 ipm with two-sided scanning that captures both sides at once.¹ The 80-page ADF and a recommended daily duty cycle of 6,000 pages make scanning easy and fast.



Simply scan to mobile devices

Send scans directly to mobile devices with the HP JetAdvantage Capture App and the HP ScanJet Wireless Adapter 100 low-cost, optional wireless accessory.⁴ Edit the image, save as popular file types, send to cloud destinations, and more.



Professional-grade scanning

Capture rich text and images while helping to save time. Streamline work by creating one-button scan settings for recurring tasks. Simplify scanning with batch processing features such as metadata and indexing.

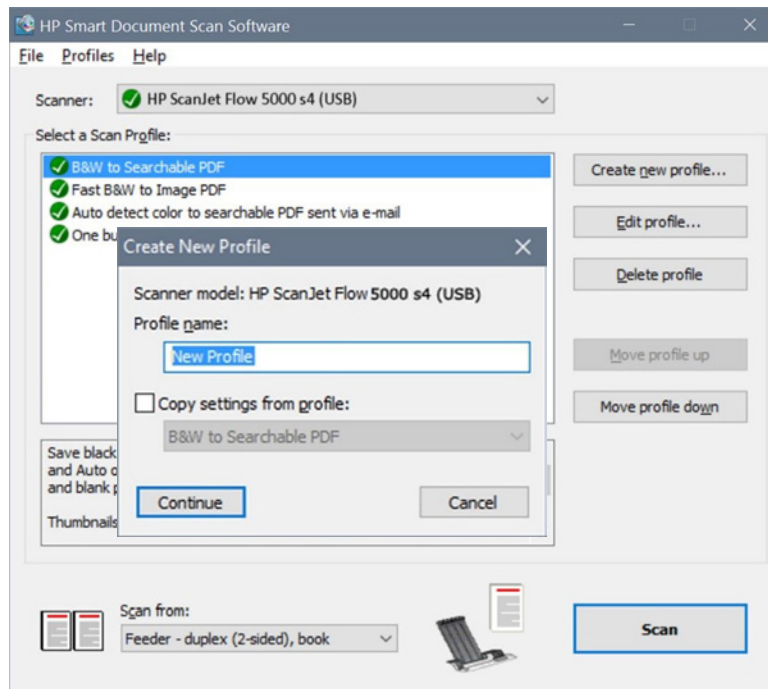
HP Smart Document Scan Software (SDSS)

Designed for office workers, this easy-to-use interface lets you quickly set up and review selected settings, then preview and modify your images before finalizing the file.

- **Save time with a simple interface.** Create profiles for the types of scan jobs you perform most often, with settings such as paper size, resolution, file format, destination(s), and more. You can quickly launch the profiles from your computer, or assign them to the front panel on your scanner—so you can execute complex jobs at the touch of a button. Conveniently perform ad-hoc scanning for one-time jobs.
- **Help increase productivity with automation.** Configure scan settings to get the results you want: automatically crop, orient, detect color, separate batches, straighten, delete blank pages, and clean up images. Preview the scan and modify as necessary, then route to single or multiple destinations, including folder, email, and integrated cloud repositories.
- **Add value by customizing results.** Save files just as you want them—compress large files for more efficient storage, automatically adjust brightness, contrast and exposure, enhance edges, and remove color, background shading, punch holes, and irregularities to get the smallest file size and clear, readable scans.

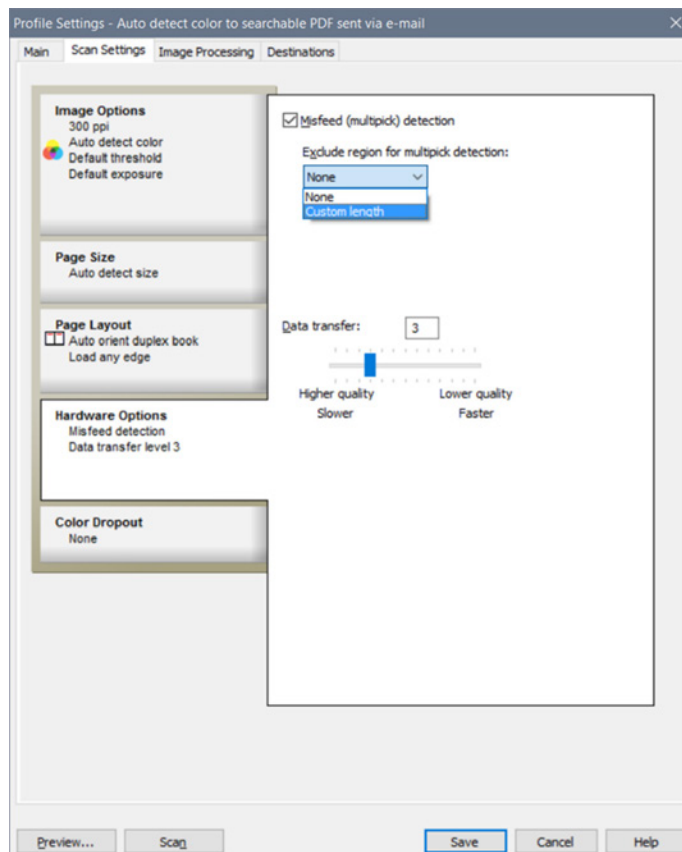
Create and manage scan profiles

Choose from a number of scan profiles with preconfigured settings. Profiles can be created and edited for common scanning scenarios. You can even give profiles descriptive names that appear on the device control panel.



Save time with helpful settings

From the **Scan Settings** tab, under **Hardware Options**, you can turn on misfeed detection. You can also specify a region of the scan to be excluded from multi-feed detection—for example, a note or a piece of tape placed on the page, which could be misinterpreted as a multi-feed.

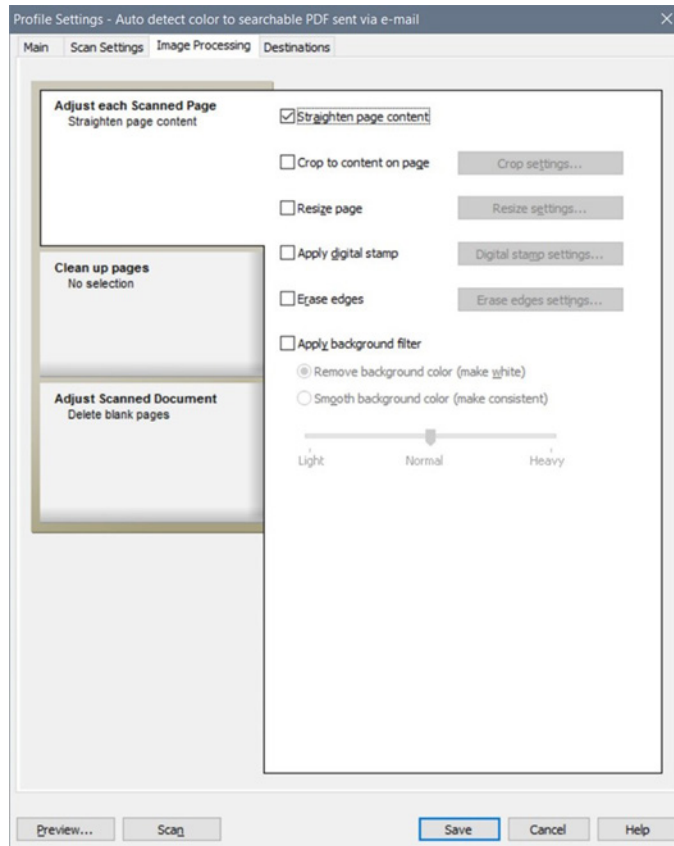


Work smarter and automate jobs with customized, one-touch settings. Spend less time scanning and more time focused on what matters most to your business.

Get the results you want

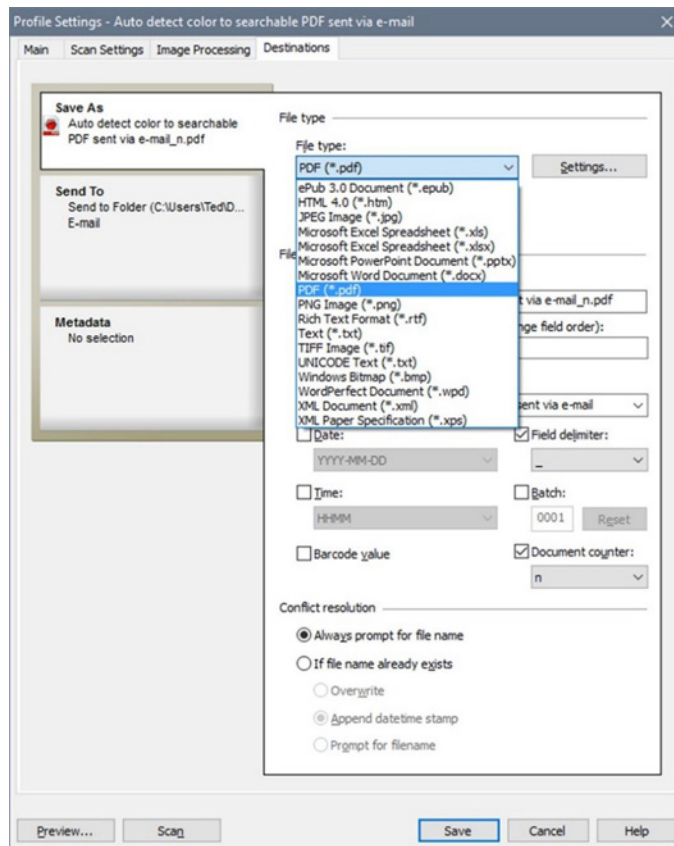
From the three fly-out menus under the **Image Processing** tab, you can:

- Take advantage of automatic tools to straighten page content
- Crop to the paper size or to the page content
- Resize pages for consistency
- Mark your document with a digital stamp
- Erase edges for a cleaner look
- Remove or regularize color backgrounds to improve legibility and consistency
- Remove blank pages, perform batch separation, remove punch holes, and more

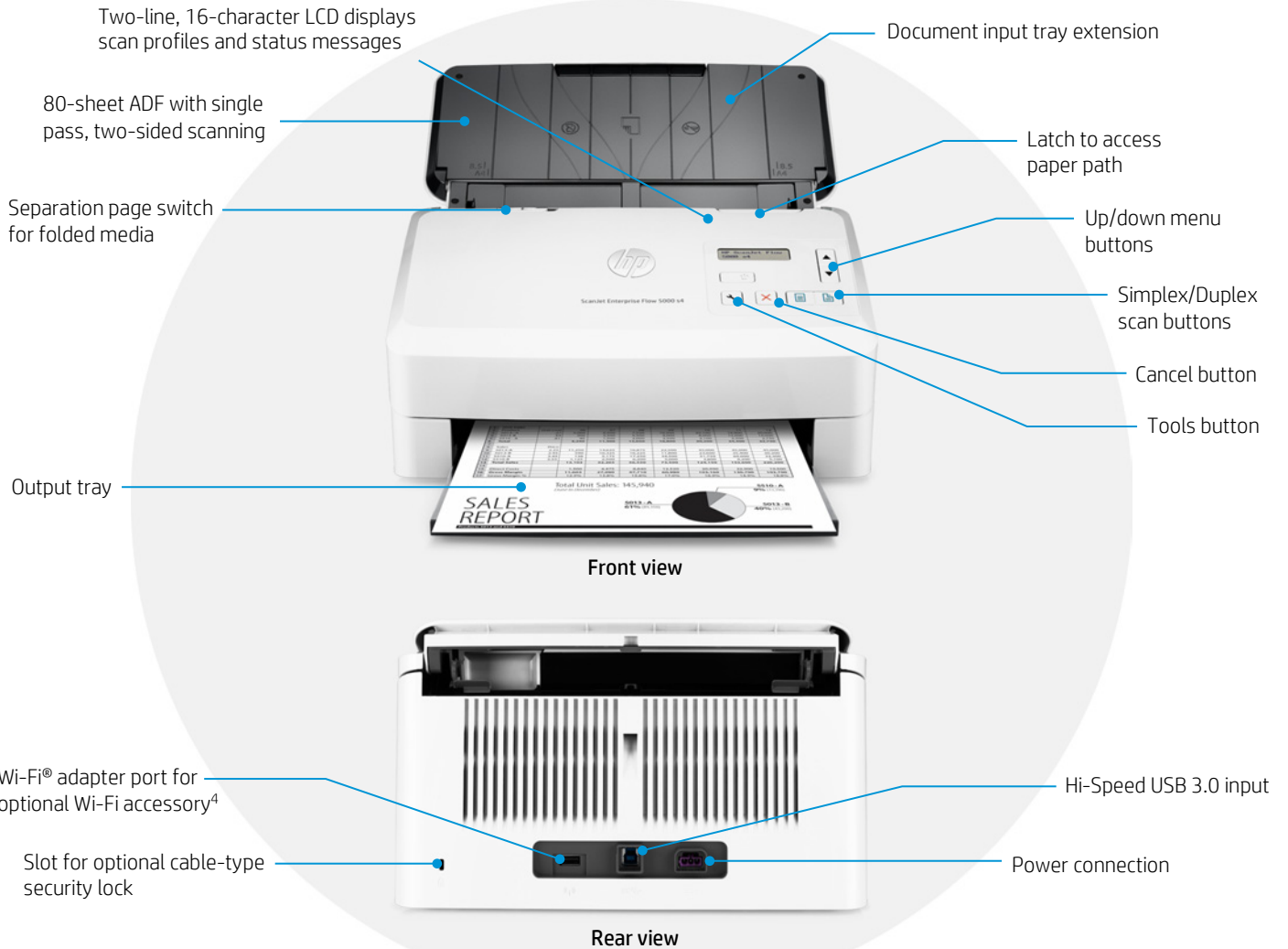


Save what you want, where you want

The **Destinations** tab, **Save As** menu, lets you choose from common file formats. You can select routing to archival, processing, or begin a business workflow. Add an optional counter and reorder components of the file name by dragging and dropping them.



Get to know the HP ScanJet Enterprise Flow 5000 s4



What's new?



HP ScanJet
Enterprise Flow
5000 s4



HP ScanJet
Enterprise Flow
5000 s2/s3

Up to 50 ppm/100 ipm scan speed (black-and-white, grayscale, and color)¹

Up to 25 ppm/50 ipm black-and-white, color¹
Up to 30 ppm/60 ipm black-and-white, color¹

[Up to 2x faster scan speeds](#)

80-sheet ADF

50-sheet ADF

[Scan larger jobs more easily with a 60% larger ADF](#)

6,000-page daily duty cycle

2,000/4,000-page daily duty cycle

[Increase productivity with a 3x higher daily duty cycle](#)

Wireless (HP ScanJet Wireless Adapter 100 as optional accessory)⁴

Not available

[Convenient mobile scanning](#)

Scan A3 folded/scan card in portrait and landscape

Not available

[More versatile scanning](#)

Supports HP JetAdvantage Capture App⁴ and HP Web Jetadmin³

Not available

[A more comprehensive solution set](#)

Supports 10.7-110 lb (40-413 g/m²) media weight

Supports 11-56 lb (41-209 g/m²) media weight

[Almost 2x greater ADF media weight capacity](#)

Technical specifications

Product number	L2755A
Scanner type and modes supported	Sheet-feed scanning with ADF, single-pass two-sided scanning, color, grayscale, or black-and-white
Scan technology	CMOS Contact Image Sensor (CIS) using LED light source, dual-head ADF scanner
Other advanced features	Auto-color detect, auto-crop, auto-exposure, auto-orient, OCR, edge removal, background cleanup, remove hole, color drop out, straighten the page, scan to cloud, scan to email, PDF security, misfeed detection advance setting, batch processing, barcode, scan to multiple destinations
Duty cycle (recommended)	6,000 pages per day
Control panel	2-line 16 character per line LCD display, Simplex button, Duplex button, Cancel button, Power button with a LED and Tool button
Scan speed at 300 dpi¹	Up to 50 ppm/100 ipm scan speed black-and-white, grayscale, and color
ADF scan resolution	Optical: up to 600 dpi (color and mono, sheet-feed); output dpi settings: 75, 150, 200, 240, 300, 400, 500, 600
Bit depth and grayscale	24-bit external, 48-bit internal; 256 grayscale levels
Compatibility	TWAIN certified version 2.1, ISIS, WIA
File formats (text and images)	For text and images: ePub 3.0, HTML 4.0, Excel file format (*.xls, *.xlsx), PowerPoint file format (*.pptx), Word (*.docx), WordPerfect (*.wpd), searchable PDF, JPEG, PNG, BMP, TIFF, Text (.txt), Rich Text (rtf) XML and XPS
Scan input modes	Two scan modes (simplex/duplex) on front-panel for HP SDSS in Windows OS and third party applications via TWAIN, ISIS, and WIA
Memory	512 MB
Processor	550 MHz
ADF media specifications	
Input capacity	Up to 80 sheets
Custom sizes	2 x 2 in to 8.5 x 122 in (5.08 x 5.08 cm to 21.6 x 309.9 cm)
Standard sizes	Letter, Legal, Executive; A4, A5, A6, A7, A8, B5, B5 (JIS); long page support up to 122 in (309.9 cm)
Media weights	10.7 to 110 lb (40 to 413 g/m ²)
Media types	Cut sheet paper, printed paper (laser and ink), pre-punched paper, bank checks, business cards, freight bills, carbonless forms, plastic carrier sheets for easily damaged documents, previously stapled media with staple removed
Connectivity	USB 2.0 and SuperSpeed USB 3.0; optional USB 2.0 port for Wi-Fi accessory
Scan destinations	Scan to email (using SMTP or via locally configured email client); Scan to printer; Scan to FTP; Scan to local or network folder; Scan to SharePoint; Scan to cloud destinations
Mobile capabilities⁴	Initiate scans directly from mobile devices via the HP ScanJet Wireless Adapter 100 optional wireless accessory and the HP JetAdvantage Capture App, then edit, save, and share files
Compatible operating systems	Microsoft® Windows® 10, 8.1, 8, 7: 32-bit or 64-bit
Minimum system requirements	Microsoft® Windows® 10, 8.1, 8, 7: 32-bit or 64-bit, 2 GB available hard disk space, CD-ROM/DVD drive or Internet connection, USB port, Microsoft® Internet Explorer
Dimensions (width x depth x height)	12.20 x 7.79 x 7.48 in (310 x 198 x 190 mm) ⁵
Weight	8.4 lb (3.8 kg)
What's in the box	HP ScanJet Enterprise Flow 5000 s4 sheet-feed scanner; Installation guide, Support flyer, Warranty guide; 2 CDs

Software included	HP WIA scan driver, HP TWAIN certified scan driver, HP Smart Document Scan Software, HP Scanner Tools Utility, I.R.I.S. Readiris™ Pro, I.R.I.S. Cardiris™, Nuance® PaperPort®, EMC ISIS driver
Warranty	One-year bench limited warranty whole unit replacement, phone and Web support included. Warranty may vary by country as required by law. Go to hp.com/support to learn about HP world-class service and support options in your region.
Environmental ranges	
Temperatures	Recommended operating: 50 to 95° F (10 to 35° C); Storage: -40 to 140° F (-40 to 60° C)
Relative humidity range	Operating range: 15 to 80% RH (non-condensing); Storage range: 0 to 90% RH (non-condensing)
Acoustic sound power emissions	6.6 B(A)
Power specifications⁶	ENERGY STAR® certified, ErP Lot 26, CECP, EPEAT® Silver registered models available ⁷
Power supply	External power adapter; Input: 90 to 246 VAC (50/60 Hz)
Power consumption	Ready: 4.4 watts, Sleep: 0.8 watts, Off/Auto-off: 0.1 watts
Energy-saving features	HP Auto-Off technology; LED light source (no warm-up time required) ⁸
Environmental specifications	RoHS-compliant, HP GSE standard
Safety and regulatory compliance	IEC 60950-1:2005 +A1 +A11 +A12 and all applicable amendments; CSA/UL 60950-1, 2nd edition (2007); EN 60950-1:2006 +A11 +A1 +A12 +A2; EAC safety; Canada cUL CoC; China CCC; European Union CE; Kenya PVOC; Kuwait TER; Nigeria SON; Saudi Arabia SASO; South Africa NRCS; Taiwan BSMI; Ukraine safety approval
Electromagnetic emission standard	Class B Emissions; CISPR 22:2008 (International); European Union EMC Directive 2014/30/EU, EN 55022:2010 (CE mark); China GB9254-2008 (CCC); Taiwan CNS13438:2006 (BSMI); USA CFR47 Part 15, Subpart B (FCC); ICES-003:2012 Issue 6 (Canada); Australia C-tick (includes New Zealand); KN 22 and Korea KCC; EAC EMC Certificate; Ukraine EMC approval; EN 61000-3-2:2014 (harmonics); EN 61000-3-3:2013 (flicker); Immunity CISPR 24:2010, EN 50024:2010

Ordering information

Use accessories and supplies specifically designed for the scanner to help provide efficient performance. To order the accessories and supplies listed here, go to hp.com. To contact HP by country, please visit hp.com/go/contact. If you don't have access to the Internet, contact your qualified HP dealer, or call HP (U.S.) at (800) 282-6672.

Scanner	HP ScanJet Enterprise Flow 5000 s4 Sheet-feed Scanner	L2755A
Wireless Accessory	HP ScanJet Wireless Adapter 100	L2761A
Supplies	HP ScanJet Enterprise Flow 5000 s4 roller replacement kit	L2756A

Learn more at
hp.com

Notes

¹ Black-and-white scan speed measured at 300 dpi using included HP Smart Document Scan Software. Color scan speed measured at 300 dpi. Actual processing speeds may vary depending on scan resolution, network conditions, computer performance, and application software.

² HP EveryPage is referred to as HP Precision Feed on HP ScanJet devices introduced prior to May 2013.

³ HP Web Jetadmin is available for download at no additional charge at hp.com/go/webjetadmin. Support for the HP ScanJet Enterprise Flow 5000 s4 will be available mid-November 2016.

⁴ Scanning from a mobile device requires the HP Wireless Adapter 100 (L2761A), which must be purchased separately, and the HP JetAdvantage Capture App. The app is available for mobile devices running Android™ version 4.0 and higher, and can be downloaded from the [Google Play™ store](https://play.google.com/store). For more information, see hp.com/go/documentmanagement. Wireless performance is dependent on physical environment and distance from access point and may be limited during active VPN connections. Wi-Fi Direct® scanning requires the mobile device to be connected directly to the Wi-Fi® network of the scanner. Wi-Fi and Wi-Fi Direct are registered trademarks of Wi-Fi Alliance®.

⁵ With input and output trays folded and covers closed.

⁶ Power requirements are based on the country/region where the scanner is sold. Do not convert operating voltages. This will damage the device and void the product warranty.

⁷ EPEAT Silver registered models of this product are available where HP registers imaging and equipment products.

⁸ Compared with products that use cold cathode fluorescent lamp (CCFL) copying.

Sign up for updates
hp.com/go/getupdated



Share with colleagues



Rate this document

© Copyright 2016 HP Development Company, L.P. The information contained herein is subject to change without notice. The only warranties for HP products and services are set forth in the express warranty statements accompanying such products and services. Nothing herein should be construed as constituting an additional warranty. HP shall not be liable for technical or editorial errors or omissions contained herein.

Android and Google Play are trademarks of Google Inc. ENERGY STAR is a registered trademark owned by the U.S. Environmental Protection Agency. Microsoft and Windows are U.S. registered trademarks of the Microsoft group of companies.

4AA6-6755ENUC, September 2016, Rev. 1

